

For Sale: "Taurus"

A Nicholson 31 built in 1978 as hull #083, Taurus is the second Nicholson 31 that has been extensively refurbished and improved by the renowned James Baldwin of Atom Voyages, and has now been placed on the market. Taurus is currently located at:

There is extensive coverage of the refurbishments and work on the YouTube channel at *Nicholson 31 Refit Tour* (Link via image below) and a full description of the refit by the owner in the Nicholson 31 April 2021 Newsletter.



Details of the refit of Taurus:

Topsides repainted with Awlgrip.

Decks repainted with Kiwi Grip.

Surflo Pro Blaster salt water wash down pump system.



Harken roller reefing system for the headsail.

Mack Pack stacking and reef system for the mainsail.

New mainsail March 2021, North Sails NPC Crosscut NorDac ND77LA
3 reefing points, 1 x full length batten
3 x leech battens



Monitor Wind Vane.

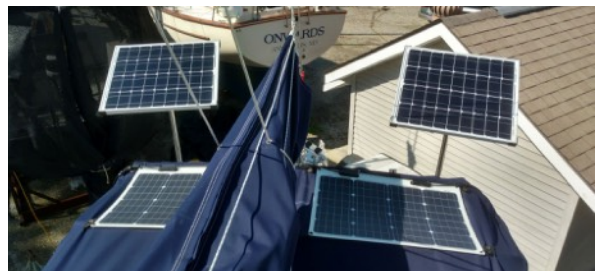
Guard rails replaced with 19 strand stainless.

New Jackline March 2021

Winslow 4 man liferaft in valise stowed in the main cabin.

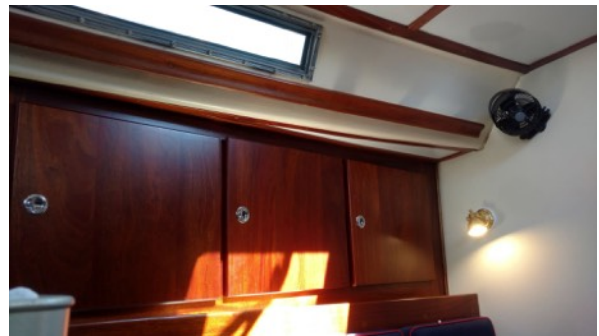
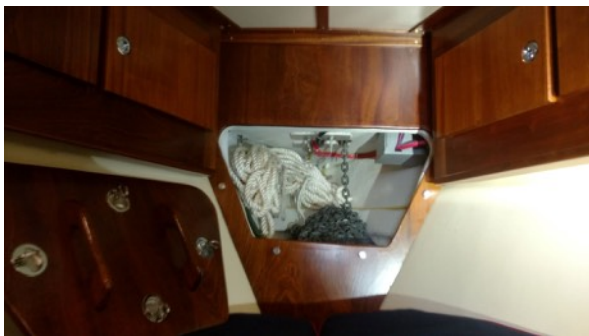


Dodger and Bimini redesigned and repurposed.



Extensive refurbishment internally:

- New headlining, FRP panels trimmed with sapele
- Watertight anchor locker strengthened for collision resistance.
- Sapele lockers in forepeak.
- Side lockers in saloon with sapele doors.
- Origo 3000 spirit stove with locker under.
- Refurbished fridge/freezer system.
- Lights replaced with LED fittings throughout.
- Lagun table in saloon, can also be fitted in the cockpit.



Engine..... Yanmar 3GM30 - 28hp 3 cylinder diesel, complete overhaul.
- Bulmar high capacity alternator fitted.
- Racor prefilter and fuel polisher installed.
- Fuel tank top remade for contents gauge sender.

New prop shaft and Campbell Sailer 3 blade prop fitted.

Lightning protection from Marine Lightning Protection Inc. installed.

Electrics completely refurbished and renewed:

Wiring replaced to PY
New switch panels
5 X 100AH house batteries
1 X engine start battery
4 X 50W solar panels
Pro Safe Galvanic Isolator
2000 W Inverter/Charger
Maxwell HR 10-8 Electric
Anchor Windlass



Brookes and Gatehouse instrument suite:

Zeus 9" display.
Triton repeaters.
4G radar.
AIS and VHF
Forward Scan sonar.
Instruments interfaced via
NMEA 2000
Raymarine EVO Tiller Pilot.
HD Pelagic tiller pilot (new)



There has been an incredible amount of thought and detail put into the refit. The work and experience of James Baldwin has ensured that the highest quality fittings and fitments have been expertly installed and commissioned. The Nicholson 31 was designed and built as an exceptional ocean cruiser; this refurbishment has brought a classic and proven yacht up to 21st century standards of refinement.

Further details available from:

jamesb.sail@protonmail.com